



BORGO IN DOGLIO

OVERVIEW & ARCHITECT'S VISION

A 'borgo' is the Italian word for small hamlet or farm community. The Doglio Borgo sits on the side of a hill looking down valley of vineyards and forests about 15kms from Todi. It has multiple buildings including a main farm house, barns and workshops which were last occupied in the 1960's. It has the potential to be a huge country villa or a community of smaller homes or a hotel on a footprint of over 1200m². It also has ample room for a swimming pool and tennis court.

This borgo is really a 'blank canvas' in a beautiful tranquil valley with tremendous potential. This is the most challenging of the three (3) unrestored properties in the portfolio because of its scale and because of the many options it offers.

Doglio is a tiny village of perhaps 50 homes with a shop and bar. Our estate is located down a narrow road about 3kms from the village.

The view stretches for many kilometers up and down the valley with our 12 hectare vineyard to the west.





MONTE NIBBIO
ESTATES

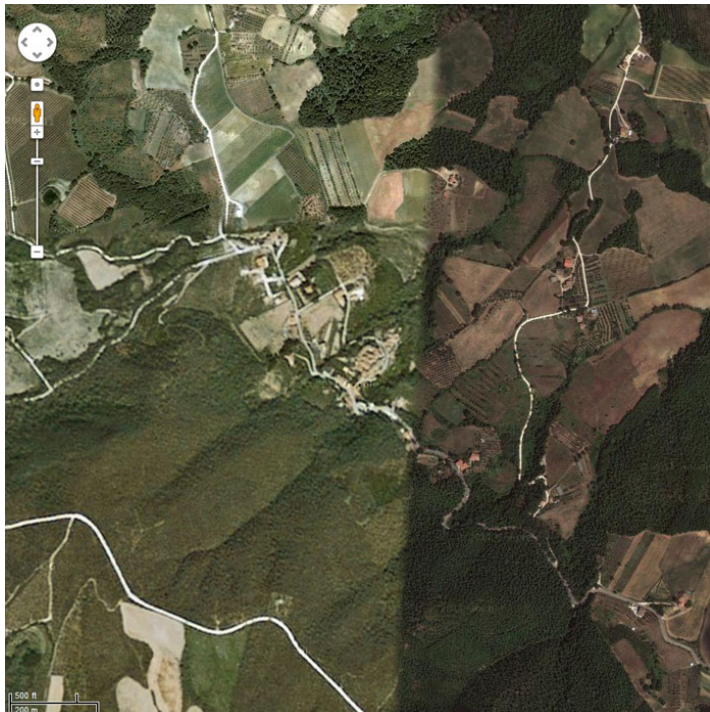
Lifestyle Italia

- €350,000 - CASA SAN GIUSEPPE
- €400,000 - CASA TODINI
- €1,850,000 - VILLA SAN BENIGNO
- €3,200,000 - MONTE NIBBIO
- > €1,100,000 - BORGO IN DOGLIO
- €6,500,000 - ENTIRE PORTFOLIO



BORGO IN DOGLIO

LOCATION - CLICK TO VIEW FULL SIZE IN GOOGLE





MONTE NIBBIO
ESTATES

Lifestyle Italia

- €350,000 - CASA SAN GIUSEPPE
- €400,000 - CASA TODINI
- €1,850,000 - VILLA SAN BENIGNO
- €3,200,000 - MONTE NIBBIO
- > €1,100,000 - BORGO IN DOGLIO
- €6,500,000 - ENTIRE PORTFOLIO



BORGO IN DOGLIO

GALLERY – SAMPLE

